



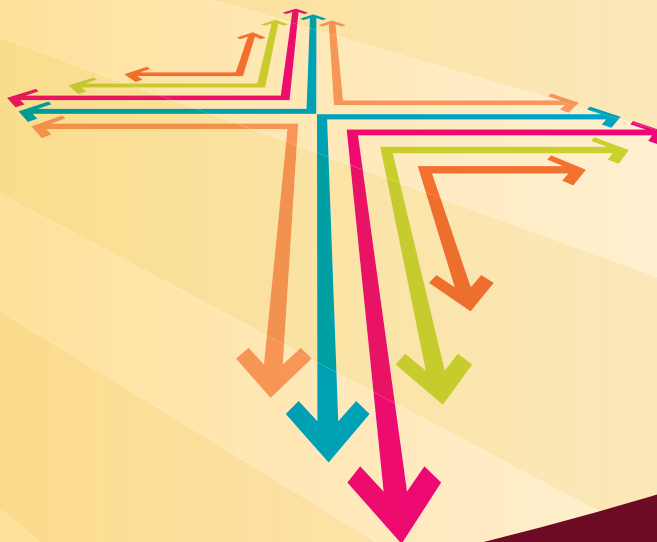
WoodLand



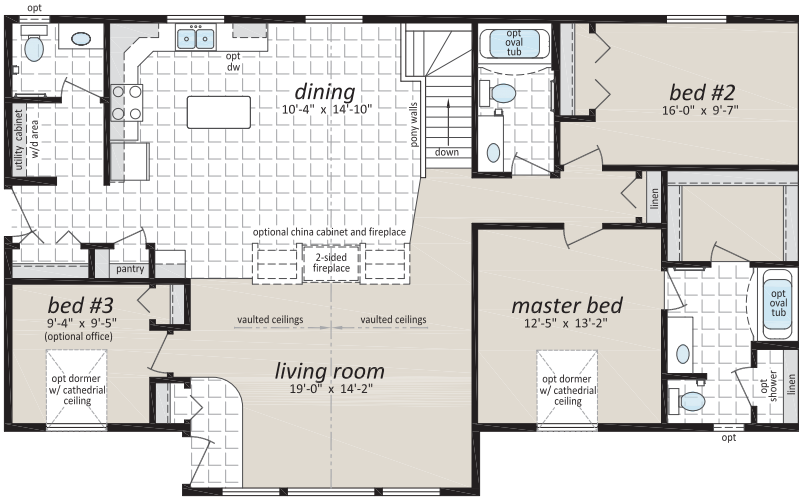
RTM (ready to move) **Home Series**



A new era of prebuilt homes



SHELTER
HOME SYSTEMS



"The Aberdeen" - WL1
32' x 54' 1,598 sq.ft.



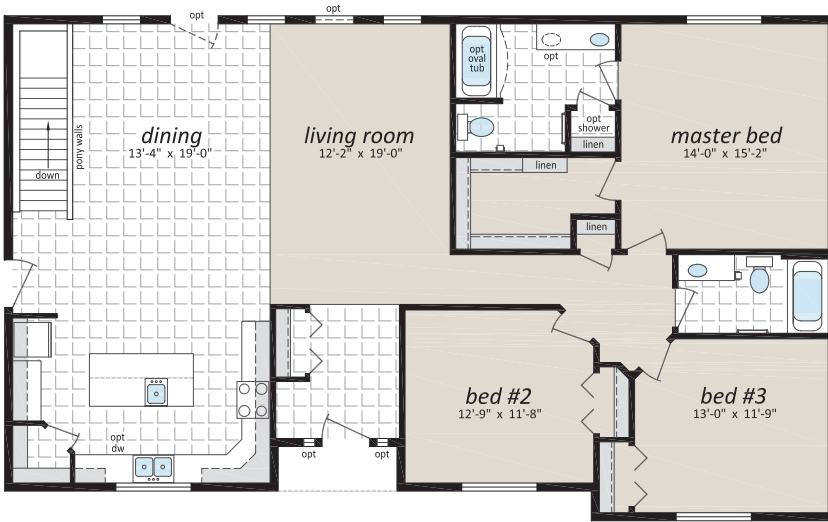
"The Arlington" - WL2
36' x 54' 1,620 sq.ft.



Some things to note with an RTM Home:

- RTM HOMES are only **ONE PIECE** up to 40' wide
- On-site assembly is considerably reduced
- 9' **CEILING**s and 24" **RESIDENTIAL EAVES**
- Once the home design has been decided, your home could be delivered to site as soon as 3-4 months
- There are 5 standard floor plans to choose from, but we can help you customize a plan to fit your needs

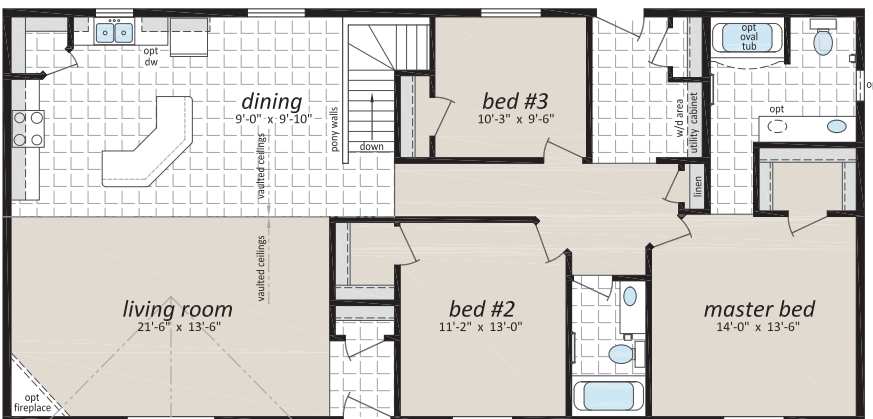
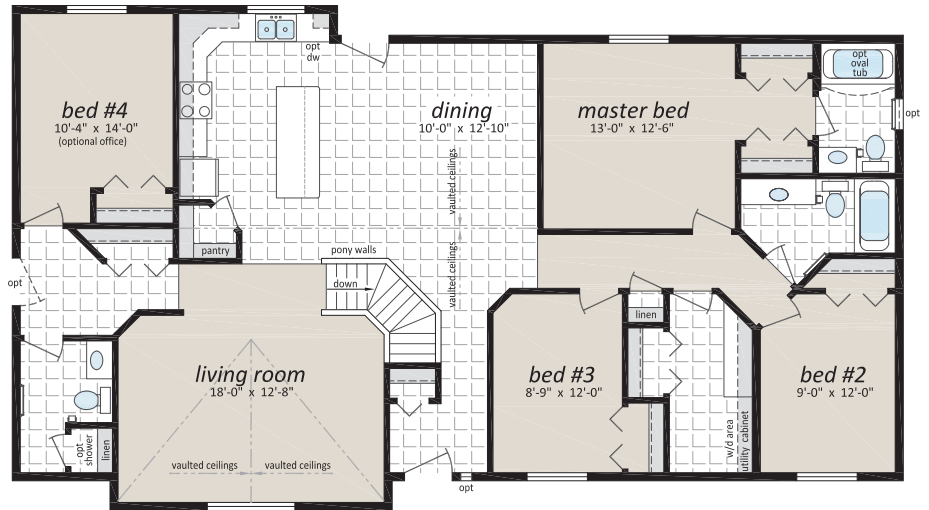




"The Bengough" - WL3
32' x 57' 1,824 sq.ft.



"The Benson" - WL4
31' x 60' 1,860 sq.ft.



"The Harris - WL5"
30' x 54' 1,620 sq.ft.

Standard Specifications

General Construction

- 1 Year Manufacturer's Warrant (10yr Available Through Retailer)
- Engineered 11-7/8" I Joist Floor System
- 23/32" T&G OSB Floor Decking
- 1/4" Proboard Underlayment Beneath Lino Areas
- Whole House Wrap
- 3/8" Exterior Wall OSB Sheathing
- 2"x6" Exterior Walls @ 24" O.C.
- 2"x4" Interior Walls @ 16" O.C.
- Insulation meets zone requirements as per 9.36 Energy Code
- All others: Walls R-22, Roof R-50
- 6 mil Poly Vapour Barrier
- 7/16" OSB Roof Sheathing w/ H-Clips
- Synthetic Underlayment
- Engineered Roof Trusses @ 24" O.C.
- 5/12 Roof Pitch
- 24" Perimeter Vented Eaves
- Vinyl Lap Siding
- IKO Architectural Asphalt Shingles
- 6" Metal Fascia / Metal Soffit
- 36" Decorative Insulated Entry Doors w/Peephole
- Keyed Alike Deadbolts
- Rough-In for Door Chime at Front Door
- White PVC Double Pane (Double Low E & Argon Filled)
- Window Sizes Plan Specific
- Obscure Bath Window (where applicable)

Interior Finish

- Cushioned Linoleum Flooring (Baths, Kitchen, Dining, Laundry)
- Plush Carpet w/ 7lb Underlayment (BDRMS/Den, L/R, Hallways)
- 1/2" Primed and Painted White Drywall with Square Corners
- Painted White Raised Panel Interior Passage Doors
- Painted White Contemporary Moulding Package
- 9' Flat Ceiling Throughout (Spantex Texture)
- Solid MDF Painted White Closet Shelving w/Rod
- Lever Style Door Handles
- Full Wall or Half Wall at Stairwell Opening (Model Specific)
- Light in Bathroom Above Mirror
- Bedroom and Hall Ceiling Lights
- Pot Lights in Kitchen (5 Total)
- Dining Room Light
- Coach Lights at All Exterior Doors
- Covered Porches/Recessed Entries Receive Pot Light(s) ILO Coach
- Light Bulb Package
- Decora Light Switches/Receptacles

Kitchen

- Frameless Cabinets w/Adjustable Shelving
- Crown Moulding on Cabinets
- Soft Close Doors and Drawers
- Standard Door Pulls
- Walk-In Pantry or Full Height Pantry
- Double Stainless-Steel Sink
- Single Lever Pull Out Faucet w/Veggie Sprayer
- Laminate Counter Top with Single Row Tile Backsplash
- 1- Bank of Drawers
- Rough-In for Vented Rangehood
- Appliances Optional

Bathrooms

- One Piece Fiberglass Oval Tub & Separate Shower in Ensuite (Most Models)
- One Piece Tub/Shower Unit in Main Bath
- Beveled Vanity Mirror Above Sinks
- Single Lever Pressure Balanced Faucet on Tub/Shower Units
- Single Lever Faucet on Vanity Sinks
- Low Volume Flush Toilets
- Low Sone Bath Fan(s) on Separate Switch
- White Vanity Sink
- Laminate Counter Top with Single Row Tile Backsplash
- Curved Shower Rods on Tub/Shower Units

Utilities

- 100 Amp Electrical Panel Mounted in Floor for Basement Hookup
- Wired CO/Smoke Detectors Main Floor & Secondary (If Applicable) Prewire in Basement
- 1-Exterior GFI Receptacle
- GFI Protected Receptacles in Bathrooms
- AFCI Protected Receptacles (as required by code)
- 2-Communication Conduits
- 5 Wire Rough-In for Thermostat
- Shut Off Valves on all Fixtures
- All Waterlines Stubbed in Floor Cavity
- All Plumbing Stubbed in Floor Cavity
- Rough-In for Radon gas venting (Basement Models)
- Hot Air and Return Air Cut Outs only with Covers
- Ducting, Plenum and Registers Not Provided



Authorized Retailer:

Intertek

Follow us:



**SHELTER
HOME SYSTEMS**

P.O. Box 845 #200 Hwy 18 West
Estevan, SK S4A 2A7
www.shelterhomes.ca

**SRI
HOMES**

This is not a fully detailed specification. SRI Homes reserves the right to change specifications, designs, materials and suppliers without notice and without incurring obligation. Information contained herein is from data available at the time of printing. Photos floor plans and renderings may show optional features. July 2018